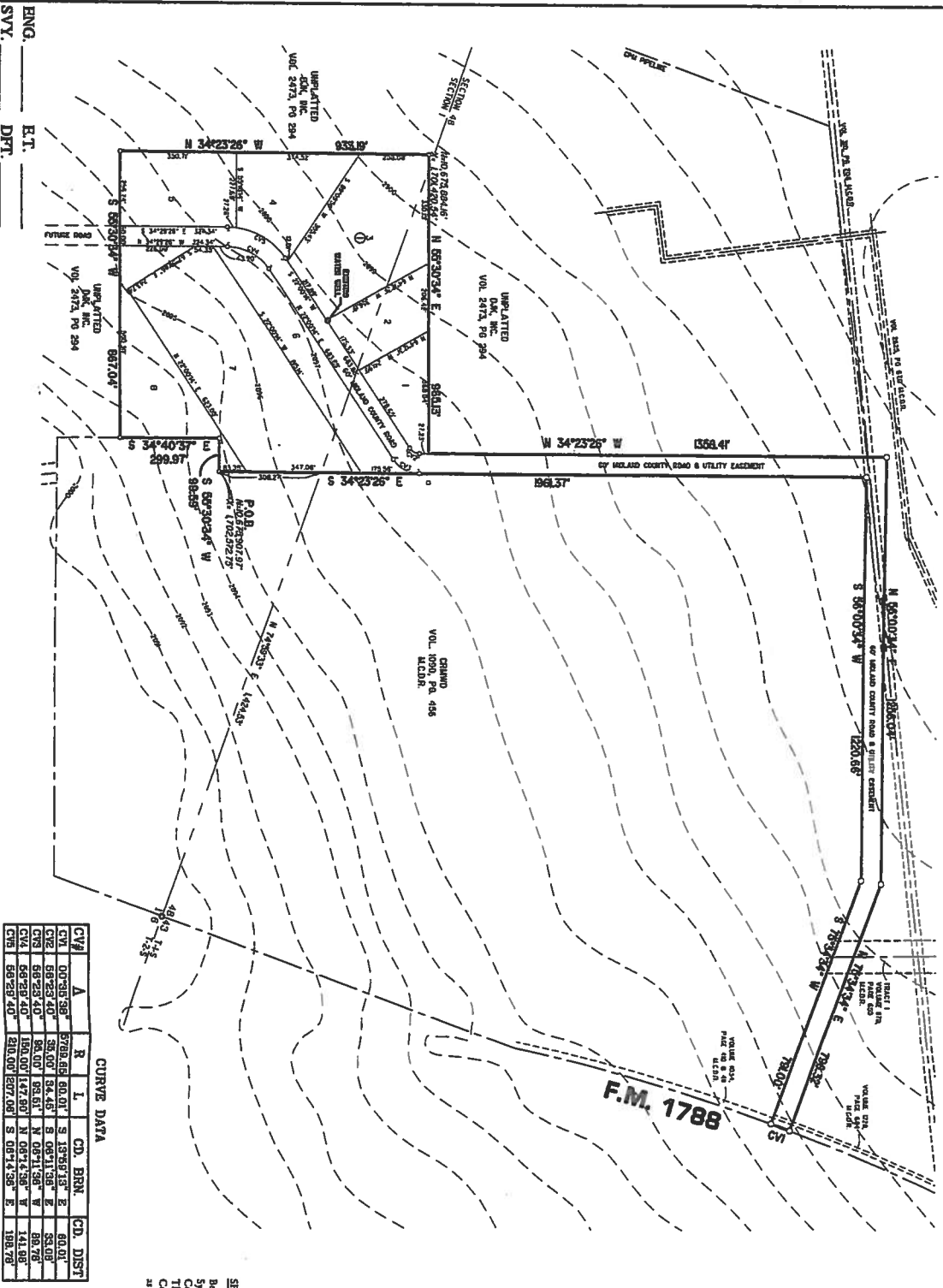


**APPENDIX "2"  
SKETCH PLAT**

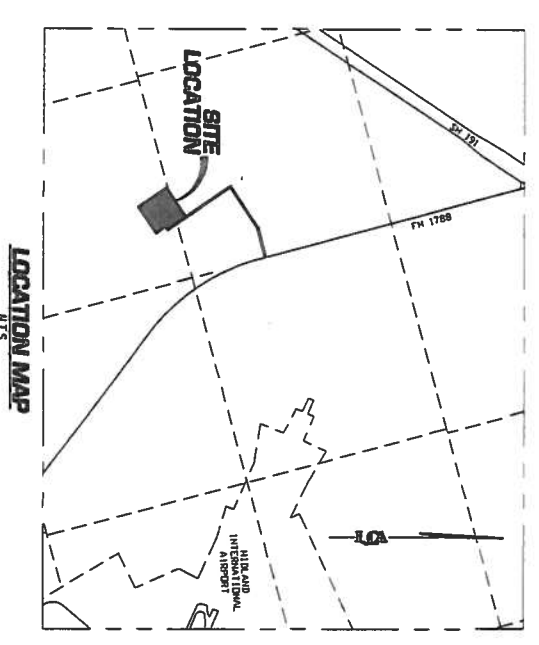
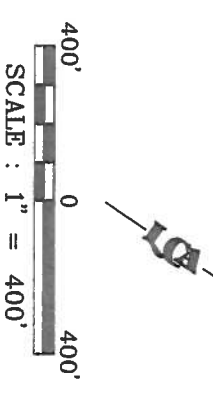
# INTERNATIONAL INDUSTRIAL PARK

**BEING A 20.0 ACRE TRACT & A 4.7 ACRE ROAD DEDICATION  
IN SECTION 48, BLOCK 41, T-1-S, AND SECTION 1, BLOCK 41, T-2-S, T&P RR CO. SURVEY  
MIDLAND COUNTY, TEXAS**



**CURVE DATA**

CV#	A	R	I	CD	BRN	CD	DIST
CV1	079.5596	8709.66	60.07	S	139.613	E	60.07
CV2	56.29740	38.00	34.45	S	0811.58	E	33.07
CV3	56.29740	84.00	86.51	N	0811.58	W	86.76
CV4	56.29740	180.00	147.80	N	0814.58	W	141.98
CV5	56.29740	210.00	207.00	S	0814.58	E	188.79



**SPECIAL STATE PLANE COORDINATE NOTE**  
Bearings & distances shown on this plat are relative to the Texas Coordinate System, 1983NAD (Central Zone) Combined Grid Factor of 0.9998499 Three Angle of 409917"  
Coordinates are based on the City of Midland GPS Control Monument - 191/1788 as published in U.S. Survey Feet as provided by the City of Midland.

**OWNER:** FORT STOCKTON HOLDING, L.L.C.  
6 DESTA DRIVE SUITE 6500  
MIDLAND, TEXAS 79705

**ENGINEER:** ICA  
521 NORTH TEXAS  
ODESSA, TEXAS 79761-5131  
PHONE: (432) 332-5058

ENGR. \_\_\_\_\_  
SVY. \_\_\_\_\_  
DPT. \_\_\_\_\_

**INTERNATIONAL INDUSTRIAL PARK**

**ICA** ENVIRONMENTAL • CIVIL ENGINEERING • LAND SURVEYING

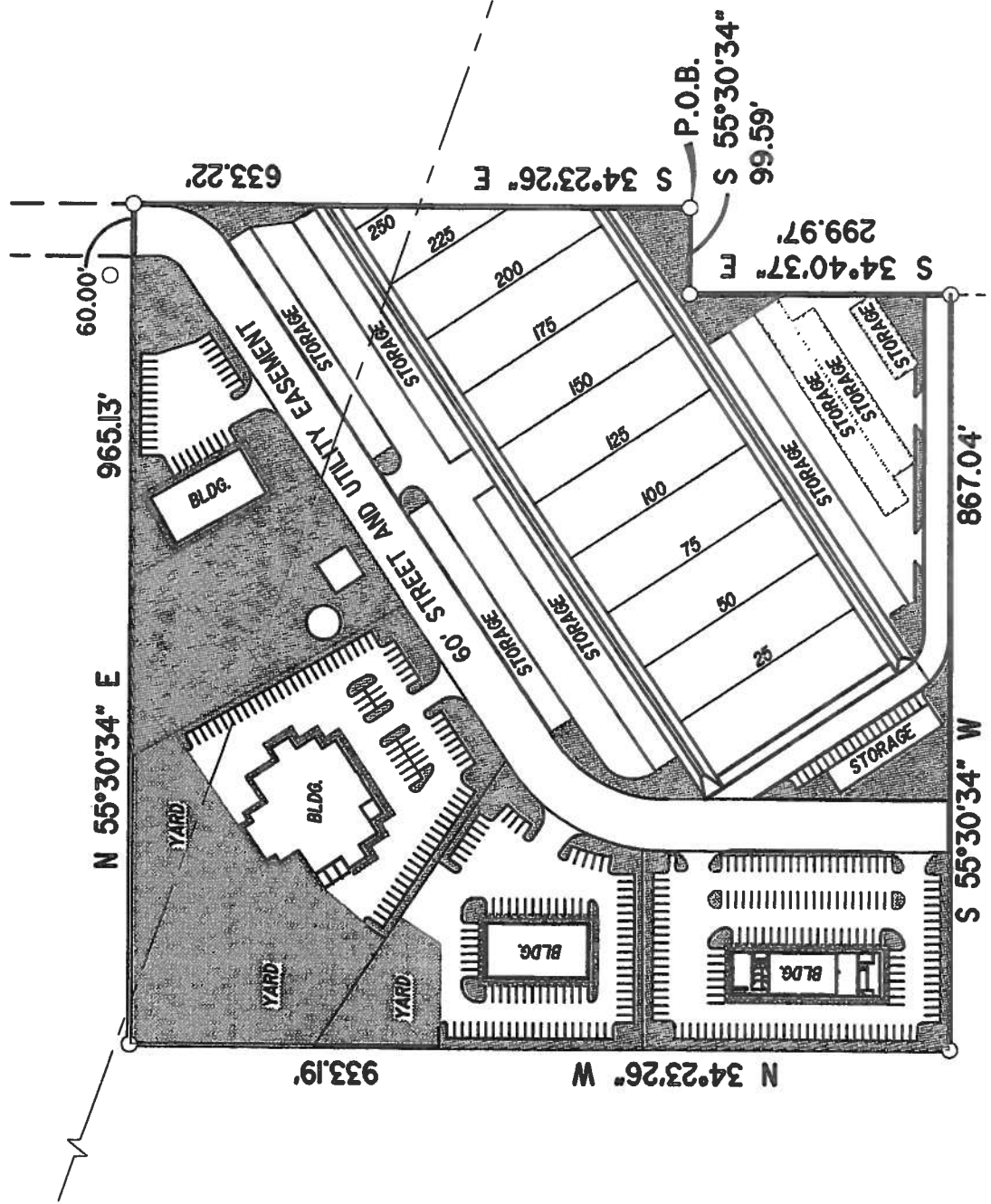
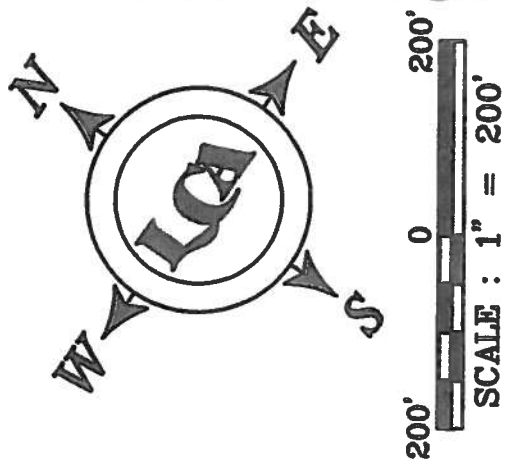
Phone # (432) 332-5058 E-Mail: [ica@icadessas.com](mailto:ica@icadessas.com) F-001363

521 North Texas, Odessa Tx, 79761 Copyright 2009 ICA

**Appendix 3**

**Preliminary Land Use Plan**

**APPENDIX "3"  
LAND USE PLAN**



ENG. \_\_\_\_\_ E.T. \_\_\_\_\_  
 SVY. \_\_\_\_\_ DFT. \_\_\_\_\_  
 LCA JOB No. 2009-039



**ENVIRONMENTAL - CIVIL ENGINEERING - LAND SURVEYING**  
 Phone # (432) 332-5058 E-Mail: lca@lcaodessa.com F-001363  
 521 North Texas, Odessa Tx. 79761  
 Copyright 2009 LCA

**Appendix 4**

**Map of the TCEQ's water CCN for Midland County, Texas**



Protecting Texas by  
Reducing and  
Preventing Pollution

Texas Commission on Environmental Quality

P.O. Box 13087

Austin, Texas 78711-3087

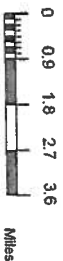
For more information

concerning this map, please contact the

Water Supply Division at (512) 230-4691

11 03 2009

### The Selected Area of Interest



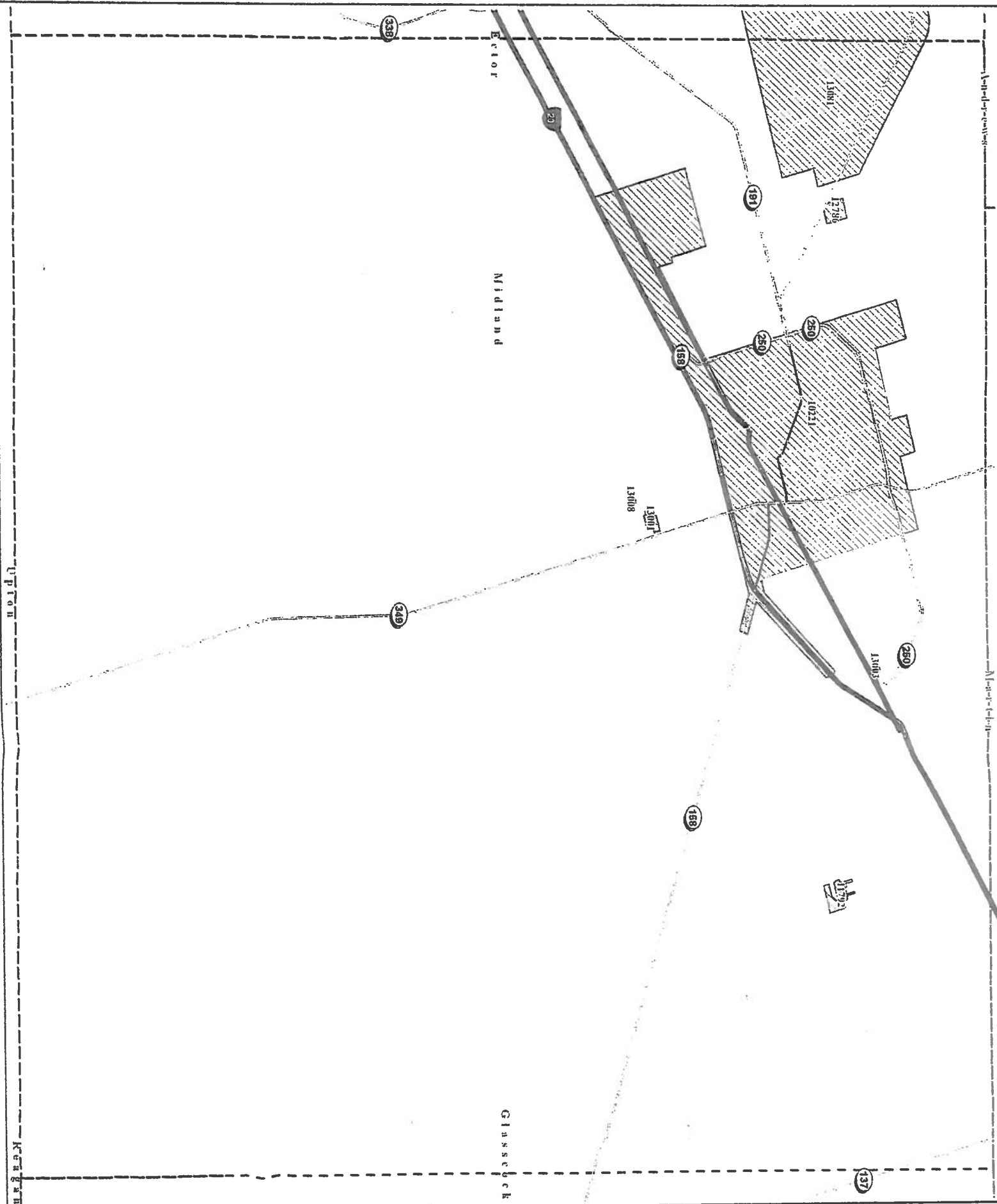
#### Legend

- Water CCN Facility Line
- Sewer CCN Facility Line
- Senate - Districts
- House - Districts
- TCEQ Service Region Boundary
- County Boundary
- Sewer CCN Service Area
- Water CCN Service Area
- City Boundary
- CCN Overlap Key
- Sewer-Water CCN Service Area



#### Disclaimer

This map was generated by the Integrated Water Utilities Database (IWUD) from the Texas Commission on Environmental Quality. No claims are made to the accuracy or completeness of the data or to its suitability for a particular use.



**Appendix 5**

**Map of the TCEQ's wastewater CCN for Midland County,  
Texas**



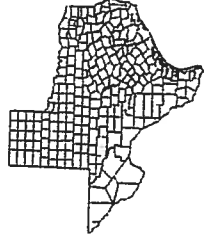
Texas Commission on Environmental Quality  
 P.O. Box 13087  
 Austin, Texas 78711-3087  
 For more information  
 concerning this map, please contact the  
 Water Supply Division at (512) 239-4691  
 11/03/2009

### The Selected Area of Interest



#### Legend

- Water CCN Facility Line
- Sewer CCN Facility Line
- Senate - Districts
- House - Districts
- TCEQ Service Region Boundary
- County Boundary
- Sewer CCN Service Area
- Water CCN Service Area
- City Boundary
- CCN Overlap Key
- Sewer-Water CCN Service Area



Disclaimer:  
 This map was generated by the Integrated Water Utilities  
 Database (IWUD) from the Texas Commission on  
 Environmental Quality. No claims are made to the  
 accuracy or completeness of the data or to its suitability

